



# Wheatfield Primary School

*Inspired to Achieve*

Respect • Responsibility • Resilience

## Newsletter

Term 6 Issue 3

Friday 19<sup>th</sup> June 2020

### This Week at Wheatfield

The purpose of this week's newsletter is to provide you with information about our staffing structure for next year. In releasing this information today we are following our normal timescales but understand that it may be challenging for some children to think about September (and a change of teacher) with this year having ended so abruptly. We recognise that there will be a need for an extended re-induction process for all children in September and we will be mindful of this when planning for the first weeks of the new school year.

We hope you find this information useful – please speak with us if you have any questions.

**Phil Winterburn - Headteacher**

### Staffing for 2019/20

The table below shows which teachers will be in each year group from September and which current class will be moving up to them.

Class & Teacher	Class Moving to them		Class & Teacher	Class Moving to them
Rec – Miss Cook (RC)	NEW		Rec – Miss Dolby (RD) <b>NEW</b>	NEW
Year 1 – Miss Clarke (1C) <b>NEW</b>	RC		Year 1 – Miss Evans (1E)	RM
Year 2 – Mrs Brown (2B)	1E		Year 2 – Miss Devine (2D)	1B
Year 3 – Miss Daley (3D)	2D		Year 3 – Miss Gregory (3G)	2M
Year 4 – Miss Long (4L)	3G		Year 4 – Mrs Moon (4M)	3B
Year 5 – Mrs Elmore (5E)	4L		Year 5 – Miss Rutherford (5R) <b>NEW</b>	4M
Year 6 – Miss Garraway (6G)	5E		Year 6 – Miss White (6W)	5D

We are pleased to welcome Miss Daley back to Year 3 after her maternity leave. You will also notice that Mrs Marsden is not listed above. I'm pleased to let you know that Mrs Marsden has been promoted to a new role of Assistant Headteacher (at Wheatfield) – she will still spend lots of time in class but will also work across the school, alongside Mr Woodworth, developing our provision.

### Welcome to ...

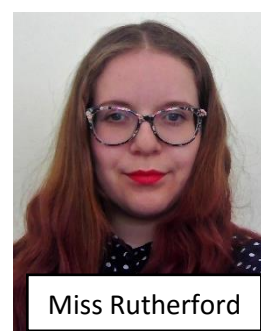
We have three new teachers joining the Wheatfield team in September: Miss Dolby (Reception), Miss Clarke (Year 1) and Miss Rutherford (Year 5). With over seventy applicants for the three positions, our three new teachers were highly impressive throughout the interview process. I know they will be an asset to our staff team and that you will all make them feel very welcome as they settle into their new roles.



Miss Dolby



Miss Clarke



Miss Rutherford

### Welcome Videos

Your child's new teacher has recorded a short 'welcome video' to introduce themselves to their new class. These will be sent out at roughly 3.00pm today via the Class Reps. If we were in school then teachers would normally drop in to say a quick hello to their new class so we hope this is the next best thing.

For the next four weeks, your child's new teacher will send a short video each Friday with a slightly different focus each week. Again, we hope that this provides some comfort for your child and sets the foundation for their future relationship.

In September, there will be lots of time to build on these foundations and, as I said earlier, we are already thinking carefully about how our curriculum will enable a smooth transition back to school.

### Term Dates and INSET Days

Term dates for the next two academic years are shown below – we hope you find these useful in planning ahead. We are currently in the process of setting our five INSET days (training days) for the next academic year. We have decided that the first two days of the school year (Tuesday 1<sup>st</sup> and Wednesday 2<sup>nd</sup> September) will be set aside for training. This means children will return to school on Thursday 3<sup>rd</sup> September. These two days will be essential for the re-induction of our staff team (including changes to safeguarding practices) as well as training in relation to any further changes in response to the Covid-19 protection measures.

#### **2020/21**

Term	Starts	Ends
Term 1	Tuesday 1 September 2020	Friday 23 October 2020
Term 2	Monday 2 November 2020	Friday 18 December 2020
Term 3	Monday 4 January 2021	Friday 12 February 2021
Term 4	Monday 22 February 2021	Thursday 1 April 2021
Term 5	Monday 19 April 2021	Friday 28 May 2021
Term 6	Monday 7 June 2021	Wednesday 21 July 2021

#### **2021/22**

Term	Starts	Ends
Term 1	Thursday 2 September 2021	Friday 22 October 2021
Term 2	Monday 1 November 2021	Friday 17 December 2021
Term 3	Tuesday 4 January 2022	Friday 18 February 2022
Term 4	Monday 28 February 2022	Friday 8 April 2022
Term 5	Monday 25 April 2022	Friday 27 May 2022
Term 6	Monday 6 June 2022	Friday 22 July 2022

### Re-Opening in September

I'm sure you will all have seen the ongoing media speculation about what will happen with regard to schools re-opening to all children in September. The truth, at present, is that we are still not sure and are awaiting further updates from the Government and Department for Education. This said, we are certainly not doing nothing, and are actively exploring ways to extend access to all children in September. As a Local Authority maintained school we will continue to work with the LA to explore ways to safely re-open, in some form, to all pupils in September as we recognise that the current situation cannot continue indefinitely. As soon as we know more, we will let you know but, for now, I would urge you to ignore some of the idle speculation that is often unsettling and many times incorrect.





**Choosing  
respect**



**Taking  
responsibility**



**Showing  
resilience**



**Being kind**



**Inspired and  
Achieving**

